



## MONTHLY CONSTRUCTION MANAGER'S REPORT



**Foster City Levee Improvements Project**  
**City Project No. CIP 301-657**



<b>Contractor:</b>	Shimmick Construction Co	<b>Report Period:</b> March 1-31, 2022
<b>CM:</b>	Tanner Pacific, Inc.	
<b>Designer:</b>	Schaaf & Wheeler	

Contract/Schedule Update					
<b>Original Contract Duration (Calendar Days):</b>	1200	<b>Additional Days Granted:</b>	0	<b>Calendar Days Remaining:</b>	650
<b>Days Elapsed:</b>	550	<b>% Elapsed:</b>	45.8%		
<b>Notice To Proceed:</b>	9/28/2020	<b>Substantial Completion Date:</b>	10/2/2023	<b>Final Completion Date:</b>	1/10/2024
Cost Management Update					
<b>Original Contract Value:</b>	\$60,218,000.00	<b>Approved CCOs:</b>	\$ 4,616,422.03	<b>Revised Contract Value:</b>	\$64,834,422.03
<b>Contingency:</b>	\$9,000,000.00	<b>Remaining Contingency:</b>	\$ 4,383,577.97	<b>% Contingency Used:</b>	51%
<b>Costs Billed to Date:</b>	\$42,113,613.11	<b>% of Contract Billed to Date:</b>	65%		



## Work Summary

### Recently Completed:

- *Initial paving and striping submittals*
- *Concrete stem wall placement for Floodwall 3 (near Baywinds Park) and backfill*
- *Floodwall 4 initial concrete footing placement (near Baywinds Park)*
- *Finalization of AP-9 Pedestrian bridge foundation design submittals*
- *Retaining Wall 2 initial courses of block placement near ~Sta. 93+00*
- *Floodwall 25 concrete footing placement at ~ Sta. 98+50 (near SM Bridge)*
- *Initial subgrade excavation for Floodwall 11 ~Sta. 102+00 (adjacent to Werder Pier)*
- *Electrical irrigation conduit installation near ~Sta. 105+00 (near Bridgeview Park)*
- *Commencement of street light pole foundations along Phase II*
- *Commencement of irrigation mainline installation along Phase II near Access Points 15-20*
- *Beginning of storm drain pipe installation near ~Sta. 189+00 (near Shorebird Park)*
- *Completion of bird nesting protocol surveys for 2022 in Phase III (Shorebird Park to Southern Project Limit)*

### Upcoming:

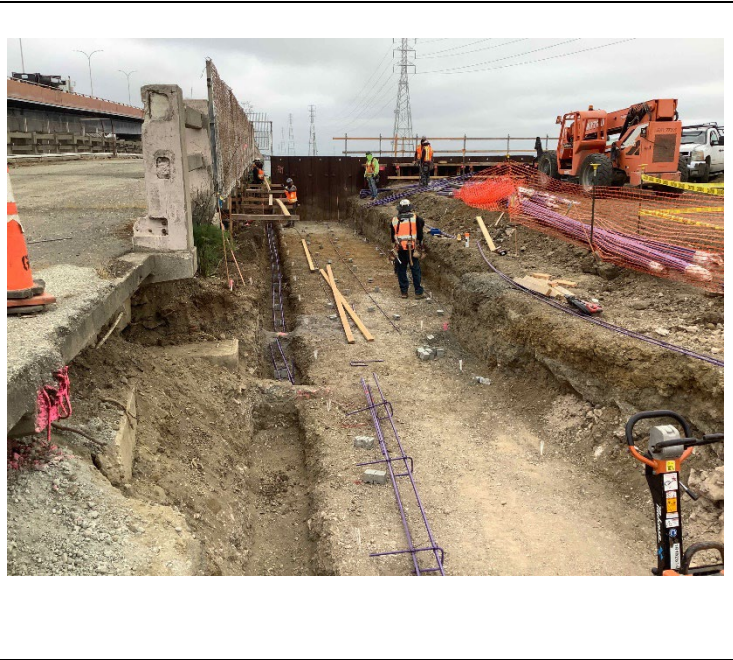
- *Continued submittals for landscaping, irrigation, striping, and site furnishings*
- *Continued import of materials to staging areas*
- *Continued construction for concrete floodwalls from ~Sta. 0+00 – Sta. 100+00 (E. 3<sup>rd</sup> Ave to SM Bridge)*
- *Excavation for Retaining Wall 1 construction near ~Sta. 50+00 (south of Baywinds Park)*
- *Floodwall 4 final concrete footing placement near ~ Sta. 45+00 (near Baywinds Park)*
- *Subgrade excavation for Floodwall 2 (near Mariner's Point Golf Center)*
- *Continued construction of bay-side paths along Floodwalls 5 & 8 (Phase III)*
- *Lagoon outfall structure work at ~Sta. 70+00 (Phase III)*
- *Continued construction of Retaining Wall 02 (northwest of the SM Bridge)*
- *Construction of AP-9 pedestrian bridge foundations at ~Sta. 85+00 (northwest of the SM Bridge)*
- *Completion of Retaining Wall 04 blocks and lightweight concrete fill (northwest of the SM Bridge)*
- *Floodwall 11 concrete footing placement near ~Sta. 102+00 (adjacent to Werder Pier)*
- *Completion of sheet pile wall concrete cap along Floodwall 12 (Phase II, Beach Park Blvd)*
- *Continued construction of bay-side paths along Floodwall 12 (Phase II, Beach Park Blvd)*
- *Continued construction of land-side access points (APs) along Phase II, Beach Park Blvd*
- *Concrete flatwork at access points in Phase II, Beach Park Blvd.*
- *Completion of street light foundations along Phase II, Beach Park Blvd*
- *Continued irrigation main installation along Phase II (Shorebird Park to Bridgeview Park)*
- *Report submission to regulatory agencies on bird nesting protocol surveys for 2022 in Phase III (Shorebird Park to Southern Project Limit)*



Monthly Progress Photos



Placement of concrete for the Floodwall 04 footing near Baywinds Park in Phase III



Rebar and formwork placement for Floodwall 11 footing near Sta. 102+00 (adjacent to Werder Pier)



Concrete placement for street light foundations along Beach Park Blvd in Phase II



Lightweight Cellular Concrete and block placement at Retaining Wall 2 near Sta. 93+00