



MONTHLY CONSTRUCTION MANAGER'S REPORT



Foster City Levee Improvements Project
City Project No. CIP 301-657



Contractor:	Shimmick Construction Co	Report Period: June 1-30, 2022
CM:	Tanner Pacific, Inc.	
Designer:	Schaaf & Wheeler	

Contract/Schedule Update					
Original Contract Duration (Calendar Days):	1200	Additional Days Granted:	0	Calendar Days Remaining:	559
Days Elapsed:	641	% Elapsed:	53.4%		
Notice To Proceed:	9/28/2020	Substantial Completion Date:	10/2/2023	Final Completion Date:	1/10/2024
Cost Management Update					
Original Contract Value:	\$60,218,000.00	Approved CCOs:	\$ 5,134,683.64	Revised Contract Value:	\$65,352,683.64
Contingency:	\$9,000,000.00	Remaining Contingency:	\$ 3,865,316.36	% Contingency Used:	57%
Costs Billed to Date:	\$44,837,750.47	% of Contract Billed to Date:	69%		



Work Summary

Recently Completed:

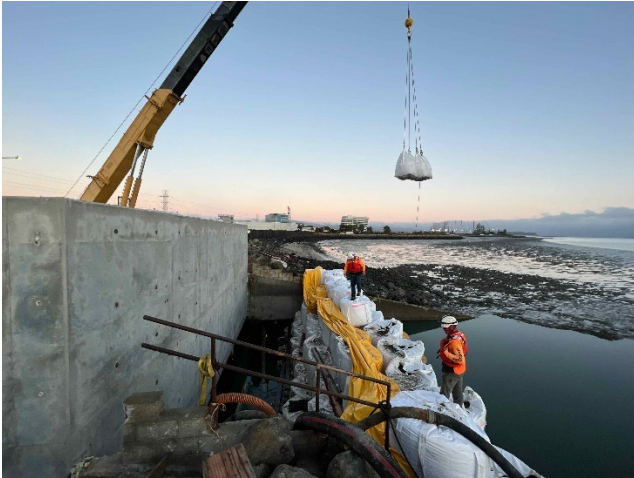
- *Initial concrete placements of Floodwall 1 & 2 near Sta. 11+00 (near Mariner's Point Golf Center)*
- *Initial block and LCC placements for Retaining Wall 1 near ~Sta. 50+00 (south of Baywinds Park)*
- *Lagoon outfall structure headwall work (in-water work) at ~Sta. 70+00 (Phase III)*
- *Slope fine grading, erosion control fabric, and mulch along Beach Park Blvd in Phase II from AP 14 to AP 24 (Bridgeview Park to north of Shorebird Park)*
- *Initial grading at access points for flatwork in Phase II along Beach Park Blvd*
- *Ice plant planting on the levee slopes along Beach Park Blvd in Phase II up to AP 24 (north of Shorebird Park)*
- *Traffic Detour Switch from Egress Bridge to Baffin St. Bridge*
- *Installation of Egress Bridge Cofferdam structure at AP 42 (Phase I).*

Upcoming:

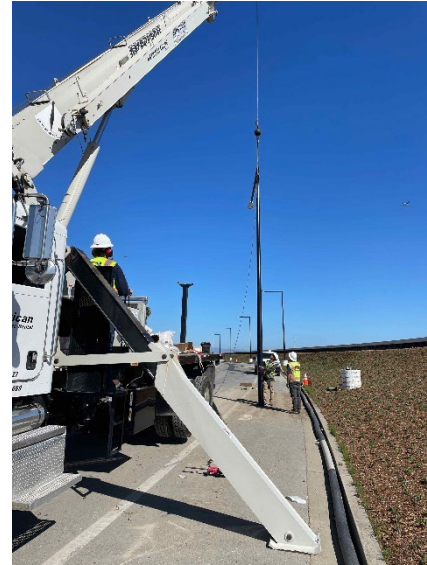
- *Continued submittals for landscaping, irrigation, striping, and site furnishings*
- *Continued import of materials to staging areas*
- *Continued construction for concrete floodwalls from ~Sta. 0+00 – Sta. 45+00 (E. 3rd Ave to Baywinds Park)*
- *Final rebar and concrete placements of Floodwalls 1 & 2 near Sta. 11+00 (near Mariner's Point Golf Center)*
- *Continued construction of bay-side paths along Floodwalls 5 & 8 (Phase III)*
- *Continued construction of Retaining Wall 02 (northwest of the SM Bridge)*
- *Access Point 02 ramp construction (near Baywinds Park)*
- *Demolition and subgrade excavation of the south abutment of the AP-9 pedestrian bridge foundation near Sta 85+00 (northwest of the SM Bridge)*
- *Rebar and concrete for the AP-9 pedestrian bridge foundations near Sta. 85+00 (northwest of the SM Bridge)*
- *Completion of Retaining Wall 02 & 04 blocks and lightweight concrete fill adjacent to AP-9 (northwest of the SM Bridge)*
- *Continued construction of bay-side paths along Floodwall 12 (Phase II, Beach Park Blvd)*
- *Access Point flatwork (concrete ramps and stairs) in Phase II along Beach Park Blvd*
- *Completion of street light foundations along Phase II, Beach Park Blvd*
- *Completion of streetlight installation along Phase II, Beach Park Blvd*
- *Wiring and energizing of streetlights along Phase II, Beach Park Blvd*
- *Access Point 24 Retaining Wall construction completion near Sta. 185+00 (north of Shorebird Park)*
- *Irrigation installation along Phase I (Shorebird Park to Southern Project Limit)*
- *Landscaping work along Phase I (Shorebird Park to Southern Project Limit)*
- *Access Point flatwork (concrete ramps and stairs) in Phase I (South of Shorebird Park)*
- *Delivery and installation of AP 42 Egress Bridge in Phase I*
- *Sheet pile concrete cap construction on Floodwall 22 (Egress Bridge to Southern Project Limit)*



Monthly Progress Photos



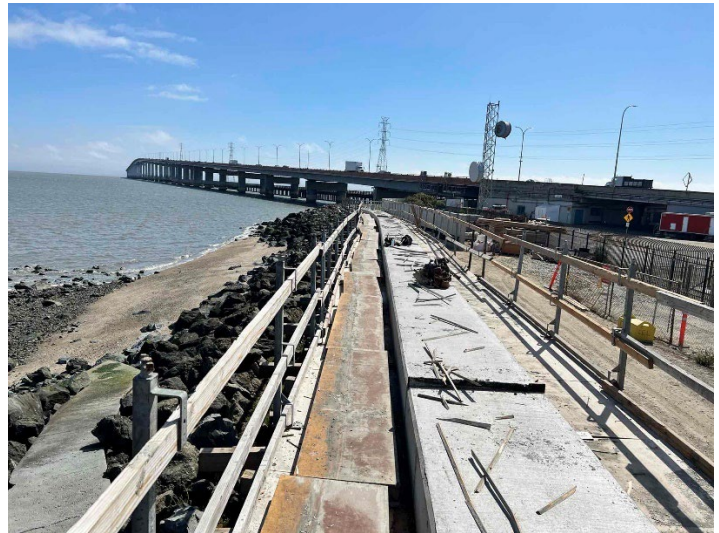
Access Point 07 super sack cofferdam removal near Sta. 70+00 in Phase III



Streetlight erection along Beach Park Blvd in Phase II



Access Point 42 (Egress Bridge) cofferdam construction near Sta. 331+00 in Phase I



Floodwall 08 sheet pile concrete cap placement near Sta. 95+00 in Phase III