



MONTHLY CONSTRUCTION MANAGER'S REPORT



Foster City Levee Improvements Project City Project No. CIP 301-657



Contractor:	Shimmick Construction Co	Report Period: January 1-31, 2023
CM:	Tanner Pacific, Inc.	
Designer:	Schaaf & Wheeler	

Contract/Schedule Update					
Original Contract Duration (Calendar Days):	1200	Additional Days Granted:	0	Calendar Days Remaining:	344
Days Elapsed:	856	% Elapsed:	71.3%		
Notice To Proceed:	9/28/2020	Substantial Completion Date:	10/2/2023	Final Completion Date:	1/10/2024
Cost Management Update					
Original Contract Value:	\$60,218,000.00	Approved CCOs:	\$ 8,676,748.97	Revised Contract Value:	\$68,894,748.97
Contingency:	\$9,000,000.00	Remaining Contingency:	\$ 323,251.03	% Contingency Used*:	96%
Costs Billed to Date:	\$55,769,793.25	% of Contract Billed to Date:	81%		

*Please note: current estimates of financial exposure on the project exceed the currently available contingency.



MONTHLY CONSTRUCTION MANAGER'S REPORT



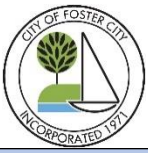
Work Summary

Recently Completed:

- Continued receipt and processing of handrail submittals
- Additional pavement work at Access Point (AP) 2 ramp near Baywinds Park
- Receipt of additional site furnishings deliveries to Sea Cloud Park staging area
- Rock slope protection (rip rap) along Beach Park Blvd
- Rebar and concrete placement for Access Point stairs along Beach Park Blvd
- Streetlight foundation installation along Beach Park Blvd
- Access Point 24 Retaining Wall construction completion near Sta. 185+00 (north of Shorebird Park)
- Initial landscape soil preparation work for ornamental plantings around Access Points along Beach Park Blvd
- Continued guardrail installation along Beach Park Blvd
- Soil preparation and ice plant installation work around Sea Cloud Park
- Chain link fencing installation around Sea Cloud Park
- Trail Signage placement from ~Sta. 200+00 – 343+00 (Shorebird Park to Southern Project Limit)
- Initial site furnishings placement from ~Sta. 200+00 - 343+00 (Shorebird Park to Southern Project Limit)
- Layout for pavement striping from ~Sta. 200+00 -Sta. 343+00 (south of Shorebird Park)
- Asphalt paving from ~Sta. 200+00 - 306+00 (Shorebird Park to Baffin Ct.)
- GraniteCrete (DG) pavement on trail shoulders from ~Sta. 200+00 – 230+00 (Shorebird Park to Sea Cloud Park)

Upcoming:

- Continued submittals for signage, site furnishings, and shade structures
- Continued import of materials to staging areas
- Continued construction of Retaining Wall 02 (northwest of the SM Bridge)
- Access Point 02 ramp completion (near Baywinds Park)
- Continued construction of sheet pile wall concrete caps north of the SM Bridge)
- Continued guardrail installation along Beach Park Blvd
- Continued construction of bay-side paths along Floodwall 12 (Beach Park Blvd)
- Continued access point flatwork (concrete ramps and stairs) along Beach Park Blvd
- Completion of light pole installation along Beach Park Blvd
- Wiring and energizing of streetlights along Beach Park Blvd
- Installation of landscape soil preparation work for ornamental plantings around Access Points along Beach Park Blvd
- Access Point flatwork repairs (concrete stairs) south of Shorebird Park
- Handrail installation from ~Sta. 200+00 -Sta. 343+00 (south of Shorebird Park)
- Pavement striping from ~Sta. 200+00 -Sta. 343+00 (south of Shorebird Park)
- Decorative pavement installation from ~Sta. 200+00 -Sta. 343+00 (south of Shorebird Park)
- GraniteCrete installation from ~Sta. 200+00 -Sta. 343+00 (south of Shorebird Park)



MONTHLY CONSTRUCTION MANAGER'S REPORT



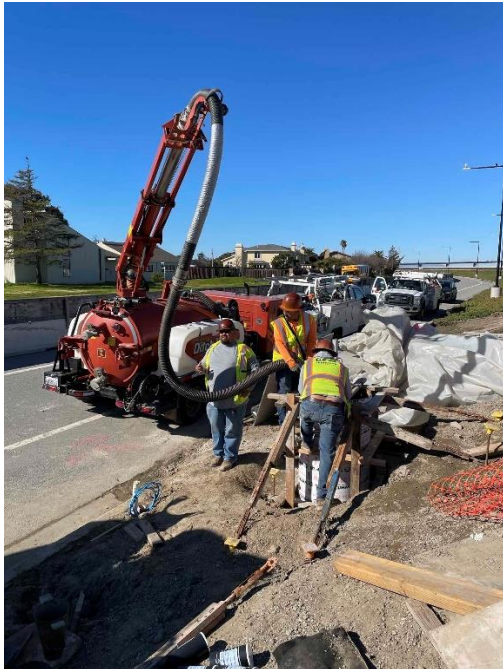
Monthly Progress Photos



Lightweight Concrete Fill at Floodwall 7 near E. Third Ave



Guardrail installation at AP 15 along Beach Park Blvd



Streetlight foundation concrete placement on Beach Park Blvd



Site furnishings installation near Sea Cloud Park