



MONTHLY CONSTRUCTION MANAGER'S REPORT



Foster City Levee Improvements Project City Project No. CIP 301-657



Contractor:	Shimmick Construction Co	Report Period: November 1-30, 2022
CM:	Tanner Pacific, Inc.	
Designer:	Schaaf & Wheeler	

Contract/Schedule Update					
Original Contract Duration (Calendar Days):	1200	Additional Days Granted:	0	Calendar Days Remaining:	406
Days Elapsed:	794	% Elapsed:	66.2%		
Notice To Proceed:	9/28/2020	Substantial Completion Date:	10/2/2023	Final Completion Date:	1/10/2024
Cost Management Update					
Original Contract Value:	\$60,218,000.00	Approved CCOs:	\$ 8,463,552.50	Revised Contract Value:	\$68,681,552.50
Contingency:	\$9,000,000.00	Remaining Contingency:	\$ 536,447.50	% Contingency Used:	94%
Costs Billed to Date:	\$53,146,261.57	% of Contract Billed to Date:	77%		



MONTHLY CONSTRUCTION MANAGER'S REPORT



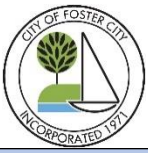
Work Summary

Recently Completed:

- Continued receipt and processing of handrail submittals for southern portion of the project (Bird Nesting Restricted area)
- Continued import and placement of rock slope protection (rip rap) along Beach Park Blvd
- Continued rebar and concrete placement for Access Point stairs along Beach Park Blvd
- Precast concrete step and articulated block mat construction at Access Point 02 near Baywinds Park
- Additional streetlight foundation installation along Beach Park Blvd (approx. 7 remaining)
- Additional streetlight erection along Beach Park Blvd (approx. 7 remaining)
- Initial landscape soil preparation work around Shorebird Park
- Initial soil preparation for landscape work around Sea Cloud Park
- Chain link fence post installation around Sea Cloud Park
- Construction of Floodwall 20 & 22 near Egress Bridge (AP 42)
- Installation of the passive flood barrier at Egress Bridge (AP 42)
- Sheet pile concrete cap construction on Floodwall 22 (Egress Bridge to Southern Project Limit)
- Asphalt paving from ~Sta. 306+00-343+00 (Baffin Ct to Southern Project Limit)
- Fine-grading from Sea Cloud Park to Southern Project Limit

Upcoming:

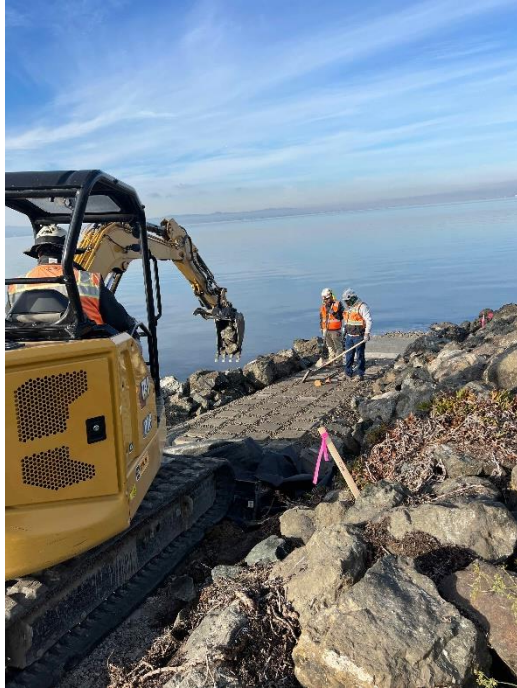
- Continued submittals for signage, site furnishings, and shade structures
- Continued import of materials to staging areas
- Continued construction of Retaining Wall 02 (northwest of the SM Bridge)
- Access Point 02 ramp completion (near Baywinds Park)
- Continued construction of sheet pile wall concrete caps north of the SM Bridge)
- Guardrail installation along Beach Park Blvd
- Continued construction of bay-side paths along Floodwall 12 (Beach Park Blvd)
- Continued access point flatwork (concrete ramps and stairs) along Beach Park Blvd
- Completion of street light foundations along Beach Park Blvd
- Completion of streetlight installation along Beach Park Blvd
- Wiring and energizing of streetlights along Beach Park Blvd
- Access Point 16 retaining wall construction completion along Beach Park Blvd
- Access Point 24 Retaining Wall construction completion near Sta. 185+00 (north of Shorebird Park)
- Access Point flatwork (concrete ramps and stairs) south of Shorebird Park
- Installation of Floodbreak barrier at AP 42 (Egress Bridge)
- Handrail installation from ~Sta. 200+00 -Sta. 343+00 (south of Shorebird Park)
- Pavement striping from ~Sta. 200+00 -Sta. 343+00 (south of Shorebird Park)
- Decorative pavement installation from ~Sta. 200+00 -Sta. 343+00 (south of Shorebird Park)
- GraniteCrete installation from ~Sta. 200+00 -Sta. 343+00 (south of Shorebird Park)



MONTHLY CONSTRUCTION MANAGER'S REPORT



Monthly Progress Photos



Construction of Access Point 02 Windsurf Ramp near Baywinds Park



Concrete cap formwork installation north of San Mateo Bridge near ~Sta. 85+00



Fine grading and concrete ramp subgrade placement at Access Point 29 near Shorebird Park



Asphalt paving operation near Floodwall 19 along O'Neil Slough



MONTHLY CONSTRUCTION MANAGER'S REPORT



Foster City Levee Improvements Project City Project No. CIP 301-657



Contractor:	Shimmick Construction Co	Report Period: December 1-31, 2022
CM:	Tanner Pacific, Inc.	
Designer:	Schaaf & Wheeler	

Contract/Schedule Update					
Original Contract Duration (Calendar Days):	1200	Additional Days Granted:	0	Calendar Days Remaining:	375
Days Elapsed:	825	% Elapsed:	68.8%		
Notice To Proceed:	9/28/2020	Substantial Completion Date:	10/2/2023	Final Completion Date:	1/10/2024
Cost Management Update					
Original Contract Value:	\$60,218,000.00	Approved CCOs:	\$ 8,463,552.50	Revised Contract Value:	\$68,681,552.50
Contingency:	\$9,000,000.00	Remaining Contingency:	\$ 536,447.50	% Contingency Used*:	94%
Costs Billed to Date:	\$54,194,033.75	% of Contract Billed to Date:	79%		
*Please note: current estimates of financial exposure on the project exceed the currently available contingency.					



MONTHLY CONSTRUCTION MANAGER'S REPORT



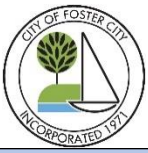
Work Summary

Recently Completed:

- Continued receipt and processing of handrail submittals for southern portion of the project (Bird Nesting Restricted area)
- Receipt of initial round of site furnishings deliveries to Sea Cloud Park staging area
- Continued import and placement of rock slope protection (rip rap) along Beach Park Blvd
- Continued rebar and concrete placement for Access Point stairs along Beach Park Blvd
- Asphalt pavement tie-in at Access Point 02 near Baywinds Park
- Additional streetlight foundation installation along Beach Park Blvd (approx. 7 remaining)
- Additional streetlight erection along Beach Park Blvd (approx. 7 remaining)
- Access Point 16 retaining wall construction completion along Beach Park Blvd
- Initial landscape soil preparation work for ornamental plantings around Access Points along Beach Park Blvd
- Initial guardrail installation at RW 05 and RW 09 along Beach Park Blvd
- Initial soil preparation for landscape work around Sea Cloud Park
- Initial chain link fencing installation around Sea Cloud Park
- Construction of Floodwall 20 & 22 near Egress Bridge (AP 42)
- Installation of the passive flood barrier at Egress Bridge (AP 42)
- Sheet pile concrete cap construction on Floodwall 22 (Egress Bridge to Southern Project Limit)
- Asphalt paving from ~Sta. 200+00 - 306+00 (Shorebird Park to Baffin Ct.)
- GraniteCrete (DG) pavement from ~Sta. 230+00 – 343+00 (Sea Cloud Park to Southern Project Limit)

Upcoming:

- Continued submittals for signage, site furnishings, and shade structures
- Continued import of materials to staging areas
- Continued construction of Retaining Wall 02 (northwest of the SM Bridge)
- Access Point 02 ramp completion (near Baywinds Park)
- Continued construction of sheet pile wall concrete caps north of the SM Bridge)
- Guardrail installation along Beach Park Blvd
- Continued construction of bay-side paths along Floodwall 12 (Beach Park Blvd)
- Continued access point flatwork (concrete ramps and stairs) along Beach Park Blvd
- Completion of streetlight foundation and light pole installation along Beach Park Blvd
- Wiring and energizing of streetlights along Beach Park Blvd
- landscape soil preparation work for ornamental plantings around Access Points along Beach Park Blvd
- Access Point 24 Retaining Wall construction completion near Sta. 185+00 (north of Shorebird Park)
- Access Point flatwork (concrete ramps and stairs) south of Shorebird Park
- Handrail installation from ~Sta. 200+00 -Sta. 343+00 (south of Shorebird Park)
- Pavement striping from ~Sta. 200+00 -Sta. 343+00 (south of Shorebird Park)
- Decorative pavement installation from ~Sta. 200+00 -Sta. 343+00 (south of Shorebird Park)
- GraniteCrete installation from ~Sta. 200+00 -Sta. 343+00 (south of Shorebird Park)



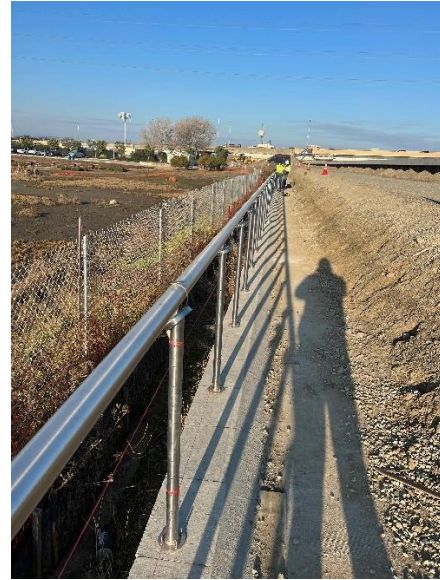
MONTHLY CONSTRUCTION MANAGER'S REPORT



Monthly Progress Photos



Concrete cap construction north of the San Mateo Bridge



Guardrail installation along RW 5 near Bridgeview Park



HOA Irrigation installation near Gateshead Park



DG paving operation near Sea Cloud Park