



## MONTHLY CONSTRUCTION MANAGER'S REPORT

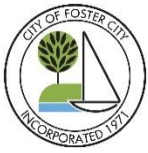


### Foster City Levee Improvements Project City Project No. CIP 301-657



<b>Contractor:</b>	Shimmick Construction Co	<b>Report Period:</b> October 1-31, 2022
<b>CM:</b>	Tanner Pacific, Inc.	
<b>Designer:</b>	Schaaf & Wheeler	

Contract/Schedule Update					
<b>Original Contract Duration (Calendar Days):</b>	1200	<b>Additional Days Granted:</b>	0	<b>Calendar Days Remaining:</b>	436
<b>Days Elapsed:</b>	764	<b>% Elapsed:</b>	63.7%		
<b>Notice To Proceed:</b>	9/28/2020	<b>Substantial Completion Date:</b>	10/2/2023	<b>Final Completion Date:</b>	1/10/2024
Cost Management Update					
<b>Original Contract Value:</b>	\$60,218,000.00	<b>Approved CCOs:</b>	\$ 8,463,552.50	<b>Revised Contract Value:</b>	\$68,681,552.50
<b>Contingency:</b>	\$9,000,000.00	<b>Remaining Contingency:</b>	\$ 536,447.50	<b>% Contingency Used:</b>	94%
<b>Costs Billed to Date:</b>	\$51,655,038.89	<b>% of Contract Billed to Date:</b>	75%		



## MONTHLY CONSTRUCTION MANAGER'S REPORT



### Work Summary

#### Recently Completed:

- *Receipt and processing of initial handrail submittals for southern portion of the project (Bird Nesting Restricted area)*
- *Continued import and placement of rock slope protection (rip rap) along Beach Park Blvd*
- *Continued rebar and concrete placement for Access Point stairs along Beach Park Blvd*
- *Closure of Access Point 02 for ramp construction near Baywinds Park*
- *Placement of the wood decking on the Access Point 09 Pedestrian Bridge near Bayside Towers*
- *Additional streetlight foundation work along Beach Park Blvd*
- *Initial landscape soil preparation work around Shorebird Park*
- *Initial soil preparation for landscape work around Sea Cloud Park*
- *Permanent irrigation installation from ~Sta. 343+00 - ~Sta. 276+00 (Southern Project Limit to Baffin St.)*
- *Irrigation installation for mitigation planting around O'Neill Slough*
- *Slough-side grading along O'Neill Slough*
- *Construction of Egress Bridge (AP 42) parapet walls*
- *Continued fine-grading in the southern portion of the project (Bird Nesting Restricted area)*

#### Upcoming:

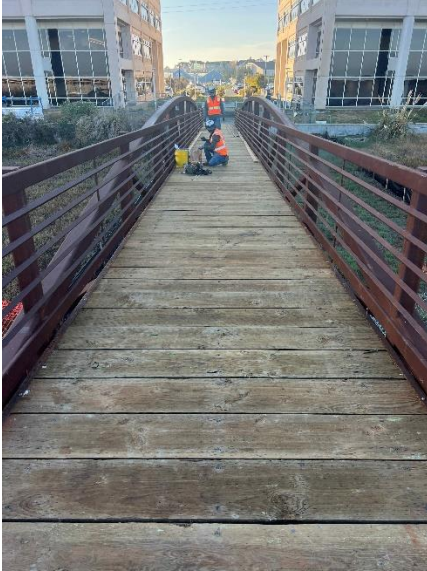
- *Continued submittals for signage, striping, and site furnishings*
- *Continued import of materials to staging areas*
- *Continued construction of Retaining Wall 02 (northwest of the SM Bridge)*
- *Access Point 02 ramp construction (near Baywinds Park)*
- *Continued construction of bay-side paths along Floodwall 12 (Beach Park Blvd)*
- *Continued access point flatwork (concrete ramps and stairs) along Beach Park Blvd*
- *Completion of street light foundations along Beach Park Blvd*
- *Completion of streetlight installation along Beach Park Blvd*
- *Wiring and energizing of streetlights along Beach Park Blvd*
- *Access Point 16 retaining wall construction completion along Beach Park Blvd*
- *Access Point 24 Retaining Wall construction completion near Sta. 185+00 (north of Shorebird Park)*
- *Landscaping work along the southern project section (Shorebird Park to Southern Project Limit)*
- *Access Point flatwork (concrete ramps and stairs) south of Shorebird Park*
- *Sheet pile concrete cap construction on Floodwall 22 (Egress Bridge to Southern Project Limit)*
- *Installation of Floodbreak barrier at AP 42 (Egress Bridge)*
- *Placement of Floodwall 20 and 21 concrete at AP 42 (Egress Bridge)*
- *Completion of fine-grading in preparation for paving work from Shorebird Park to Southern Project Limit)*



## MONTHLY CONSTRUCTION MANAGER'S REPORT



### Monthly Progress Photos



Wood decking installed at AP 9 pedestrian bridge near Bayside Towers



Fine grading operations south of Sea Cloud Park



Rebar placement at Floodwall 20 and 21 near AP 42 (Egress Bridge)



Irrigation installation along the trail edge south of Gateshead Park