



MONTHLY CONSTRUCTION MANAGER'S REPORT



Foster City Levee Improvements Project
City Project No. CIP 301-657



Contractor:	Shimmick Construction Co	Report Period: September 1-30, 2022
CM:	Tanner Pacific, Inc.	
Designer:	Schaaf & Wheeler	

Contract/Schedule Update					
Original Contract Duration (Calendar Days):	1200	Additional Days Granted:	0	Calendar Days Remaining:	467
Days Elapsed:	733	% Elapsed:	61.1%		
Notice To Proceed:	9/28/2020	Substantial Completion Date:	10/2/2023	Final Completion Date:	1/10/2024
Cost Management Update					
Original Contract Value:	\$60,218,000.00	Approved CCOs:	\$ 8,307,895.95	Revised Contract Value:	\$68,525,895.95
Contingency:	\$9,000,000.00	Remaining Contingency:	\$ 692,104.05	% Contingency Used:	92%
Costs Billed to Date:	\$50,466,318.34	% of Contract Billed to Date:	74%		



Work Summary

Recently Completed:

- Continued import and placement of rock slope protection (rip rap) along Beach Park Blvd
- Initial rebar and concrete placement for Access Point stairs along Beach Park Blvd
- Bench platform retaining wall construction, grout, and capstones along Beach Park Blvd
- Shade structure foundation excavation
- Earthen fill for the access ramp at AP 25 (north of Shorebird Park)
- Shorebird Park earthen embankment fill
- Settlement monitoring period for Shorebird Park and Sea Cloud Park earthen fill sections
- Utility wall construction at AP 31 (near the Lagoon intake structure)
- Irrigation investigation work from Sta. 202+20-343+00
- Initial permanent irrigation installation from Sta. 202+20 -0343+00
- Excavation and construction of gabion basket wall adjacent to Floodwall 19
- Construction of the tie-in floodwall to the O'Neill Tide Gate near Sta. 343+00
- Initial submittal of handrail shop drawings

Upcoming:

- Continued submittals for landscaping, irrigation, striping, and site furnishings
- Continued import of materials to staging areas
- Continued construction of Retaining Wall 02 (northwest of the SM Bridge)
- Access Point 02 ramp construction (near Baywinds Park)
- Continued construction of bay-side paths along Floodwall 12 (Beach Park Blvd)
- Continued access point flatwork (concrete ramps and stairs) along Beach Park Blvd
- Completion of street light foundations along Beach Park Blvd
- Completion of streetlight installation along Beach Park Blvd
- Wiring and energizing of streetlights along Beach Park Blvd
- Access Point 16 retaining wall construction completion along Beach Park Blvd
- Access Point 24 Retaining Wall construction completion near Sta. 185+00 (north of Shorebird Park)
- Landscaping work along the southern project section (Shorebird Park to Southern Project Limit)
- Access Point flatwork (concrete ramps and stairs) south of Shorebird Park
- Sheet pile concrete cap construction on Floodwall 22 (Egress Bridge to Southern Project Limit)
- Construction of Egress Bridge (AP 42) parapet walls
- Installation of Floodbreak barrier at AP 42
- Completion of fine-grading in preparation for paving work from Shorebird Park to Southern Project Limit)



MONTHLY CONSTRUCTION MANAGER'S REPORT



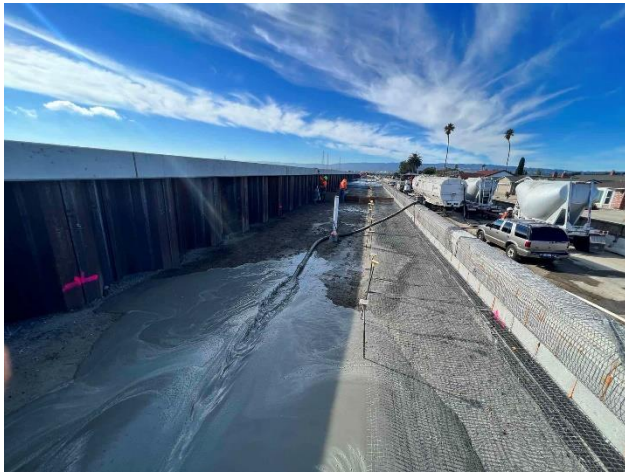
Monthly Progress Photos



Earthen fill operations at Access Point 25 north of Shorebird Park



Forming of Access Point staircases along Beach Park Blvd



Lightweight cellular concrete fill operations north of Shorebird Park along Beach Park Blvd.



Irrigation installation along the trail edge south of Sea Cloud Park.