



## MONTHLY CONSTRUCTION MANAGER'S REPORT



### Foster City Levee Improvements Project City Project No. CIP 301-657



<b>Contractor:</b>	Shimmick Construction Co	<b>Report Period:</b> May 1-31, 2023
<b>CM:</b>	Tanner Pacific, Inc.	
<b>Designer:</b>	Schaaf & Wheeler	

Contract/Schedule Update					
<b>Original Contract Duration (Calendar Days):</b>	1200	<b>Additional Days Granted:</b>	0	<b>Calendar Days Remaining:</b>	224
<b>Days Elapsed:</b>	976	<b>% Elapsed:</b>	81.3%		
<b>Notice To Proceed:</b>	9/28/2020	<b>Substantial Completion Date:</b>	10/2/2023	<b>Final Completion Date:</b>	1/10/2024
Cost Management Update					
<b>Original Contract Value:</b>	\$60,218,000.00	<b>Approved CCOs:</b>	\$11,904,421.53	<b>Revised Contract Value:</b>	\$72,122,421.53
<b>Contingency:</b>	\$12,491,635.92	<b>Remaining Contingency:</b>	\$587,214.39	<b>% Contingency Used*:</b>	95%
<b>Costs Billed to Date:</b>	\$ 61,670,517.98	<b>% of Contract Billed to Date:</b>	86%		



## MONTHLY CONSTRUCTION MANAGER'S REPORT



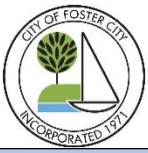
### Work Summary

#### Recently Completed:

- *Initial fine grading of the trail from the SM Bridge to Baywinds Park*
- *Installation of decorative concrete panels along Beach Park Blvd*
- *Trench drain installations along Beach Park Blvd completed from SM Bridge to Shorebird Park*
- *Installed ornamental plantings and associated irrigation around Access Points along Beach Park Blvd*
- *Installation of trail signage, striping, and site furnishings along Beach Park Blvd From SM Bridge to Shorebird Park*
- *Installation of Rapid Flashing Beacons at crosswalks along Beach Park Blvd*
- *Shade structure fabric erected near Access Point 17 along Beach Park Blvd*
- *Site furnishings installed at Access Points 17 & 18*
- *Completion of hydroseeding at Bridge view Park*
- *Installation of new curb and gutter near Access Point 24 and 25 along Beach Park Blvd*
- *Final access point flatwork (concrete ramps and stairs) along Beach Park Blvd*
- *Restoration and landscaping of slope at Access Point 25 near Shorebird Park*
- *Installation of decorative asphalt and striping along Bay trail From SM Bridge to Shorebird Park*
- *Stamped concrete boardwalk installation at Access Point 17 along Beach Park Blvd*

#### Upcoming:

- *Continued submittals for handrail shop drawings*
- *Continued import of materials to staging areas*
- *Reconfiguration of closure fencing near Baywinds Park for AP 3 ramp construction*
- *Landscaping and plantings near Mariner's Point Golf Center*
- *Floodwall 5 concrete caps completion north of the SM Bridge*
- *Continued construction of bay-side paths north of the SM Bridge*
- *Completion of fine grading north of the SM Bridge*
- *Asphalt trail paving north of the SM Bridge*
- *Trench drain installation north of the SM Bridge*
- *Hydroseeding north of the SM Bridge*
- *Continued guardrail, handrail and permanent fencing installation along Beach Park Blvd*
- *Removal of K-rail along Beach Park Blvd*
- *Slurry seal and restriping of Beach Park Blvd*
- *Connecting and energizing of streetlights along Beach Park Blvd*
- *Final handrail punch list from ~Sta. 205+00 - 343+00 (Foster City Blvd to Southern Project Limit)*
- *Access Point 30 guardrail installation and opening near Wheelhouse Lane*
- *Access Point 31 (lagoon intake structure) completion and opening*



## MONTHLY CONSTRUCTION MANAGER'S REPORT



### Monthly Progress Photos



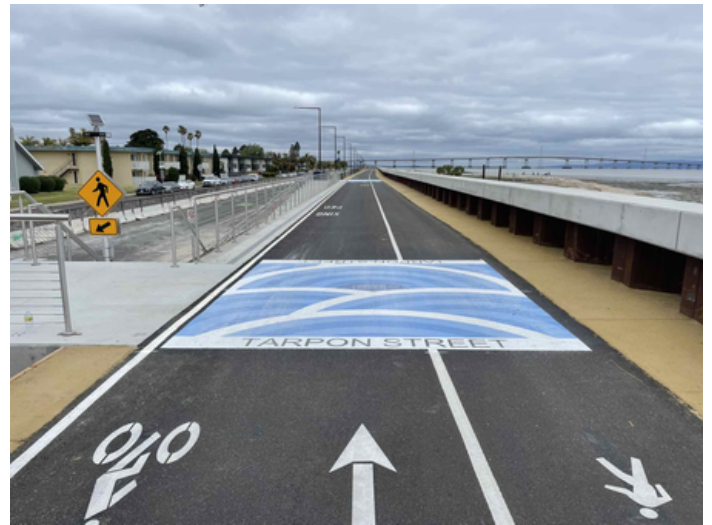
Site furnishings installed at Access Point 17



Trench Drain and Railing being worked on at Retaining Wall 30 and Retaining Wall 29



Curb and Gutter Placement at Section 19



Decorative pavement and striping at Access Point 22